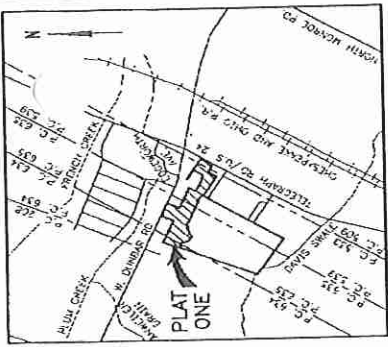
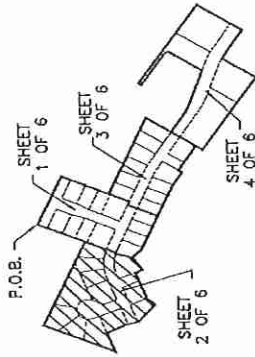


SOUTHPOINT SQUARE PLAT ONE

BEING PART OF PRIVATE CLAIMS 509, 539, 634, AND 635,
TOWN 7 SOUTH, RANGE 8 EAST,
MONROE TOWNSHIP, MONROE COUNTY, MICHIGAN.



LOCATION MAP
NOT TO SCALE



INDEX OF SHEETS
NOT TO SCALE

LEGEND

- 1) ALL DIMENSIONS ARE IN FEET.
- 2) ALL CURVE DIMENSIONS ARE ALONG THE ARC.
- 3) 4" DIAMETER CONCRETE MONUMENTS 36" LONG ENCASTING A 1/2" STEEL ROD 36" IN LENGTH HAVE BEEN PLACED AT ALL POINTS MARKED THUS: "O". EXISTING 4" DIAMETER CONCRETE MONUMENTS ENCASTING A 1/2" DIAMETER STEEL ROD 36" IN LENGTH ARE MARKED THUS: "M".
- 4) TYPICAL LOT CORNERS HAVE BEEN MARKED WITH STEEL RODS, 18" IN LENGTH, AND 5/8" IN OUTSIDE DIAMETER.
- 5) BEARINGS WERE ESTABLISHED FROM THE PLAT OF TELBAR PLACE NO. 1, AS RECORDED IN L. 7, P. 45 OF THE MONROE COUNTY PLAT RECORD.
- 6) (R) DENOTES A RADIAL LINE.
- 7) (NR) DENOTES A NON-RADIAL LINE.



Michael D. Kostecke
MICHAEL D. KOSTECKE, P.S.
NO. 43059 65750

MANNIK & SMITH, INC.
CONSULTING ENGINEERS
MONROE, MICHIGAN



CURVE DATA

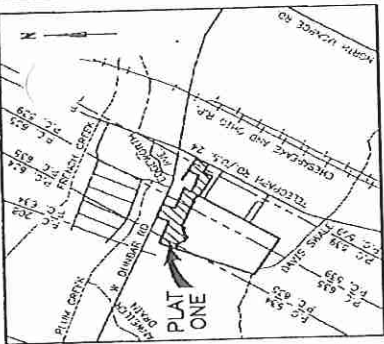
NO.	CENTRAL ANGLE (A)	RADIUS	ARC LENGTH	CHORD	CHORD BEARING
3	45°00'00"	270.00'	212.06'	206.65'	S.88°21'58"E.
4	45°00'00"	164.53'	160.73'	160.73'	S.88°21'58"E.
5	60°00'00"	75.00'	78.54'	75.00'	N.09°08'02"E.
6	246°00'00"	85.00'	272.27'	112.58'	N.80°51'58"W.
7	02°29'28"	230.00'	10.00'	10.00'	N.67°53'18"E.
8	06°24'13"	170.00'	19.00'	18.99'	N.62°45'45"E.



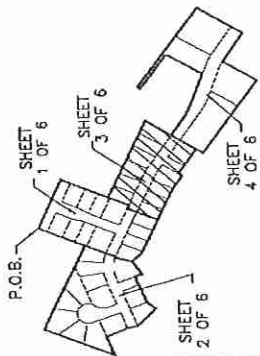
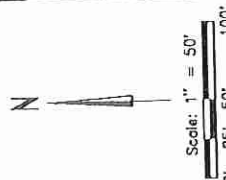
DETAIL "A"
SCALE: 1" = 20'

SOUTHPOINT QUARE PLAT ONE

BEING PART OF PRIVATE CLAIMS 509, 539, 634, AND 635,
TOWN 7 SOUTH, RANGE 8 EAST,
MONROE TOWNSHIP, MONROE COUNTY, MICHIGAN.



LOCATION MAP
NOT TO SCALE



INDEX OF SHEETS
NOT TO SCALE



LEGEND

- 1) ALL DIMENSIONS ARE IN FEET.
- 2) ALL CURVE DIMENSIONS ARE ALONG THE ARC.
- 3) 4" DIAMETER CONCRETE MONUMENTS 36" LONG ENCASED AT A 1/2" STEEL ROD 36" IN LENGTH HAVE BEEN PLACED AT ALL POINTS MARKED THUS: "o". EXISTING 4" DIAMETER CONCRETE MONUMENTS ENCASED A 1/2" DIAMETER STEEL ROD 36" IN LENGTH ARE MARKED THUS: "o".
- 4) TYPICAL LOT CORNERS HAVE BEEN MARKED WITH STEEL RODS, 18" IN LENGTH, AND 5/8" IN OUTSIDE DIAMETER.
- 5) BEARINGS WERE ESTABLISHED FROM THE PLAT OF TELBAR PLACE NO. 1, AS RECORDED IN L. 7, P. 45 OF THE MONROE COUNTY PLAT RECORD.
- 6) (R) DENOTES A RADIAL LINE.
- 7) (NR) DENOTES A NON-RADIAL LINE.

Michael D. Kostecke
MICHAEL D. KOSTECKE, P.S.
NO. 43059

65.750

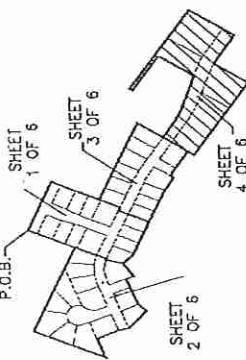
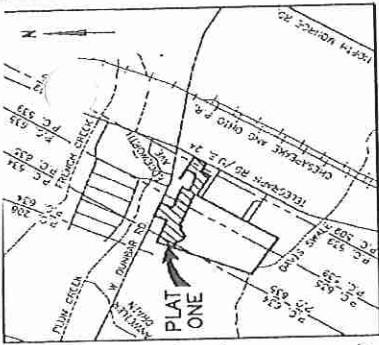
MANNIK & SMITH, INC.
CONSULTING ENGINEERS
MONROE, MICHIGAN

CURVE DATA

NO.	CENTRAL ANGLE (Δ)	RADIUS	ARC LENGTH	CHORD	CHORD BEARING
1	09°05'15"	430.00'	68.20'	68.13'	S.61°19'21"E.
2	09°05'15"	370.00'	58.68'	58.52'	S.61°19'21"E.

SOUTHPOINTE SQUARE PLAT ONE

BEING PART OF PRIVATE LOTS AIMS 509, 539, 634, AND 635,
TOWN 7 SOUTH, RANGE 8 EAST,
MONROE TOWNSHIP, MONROE COUNTY, MICHIGAN.

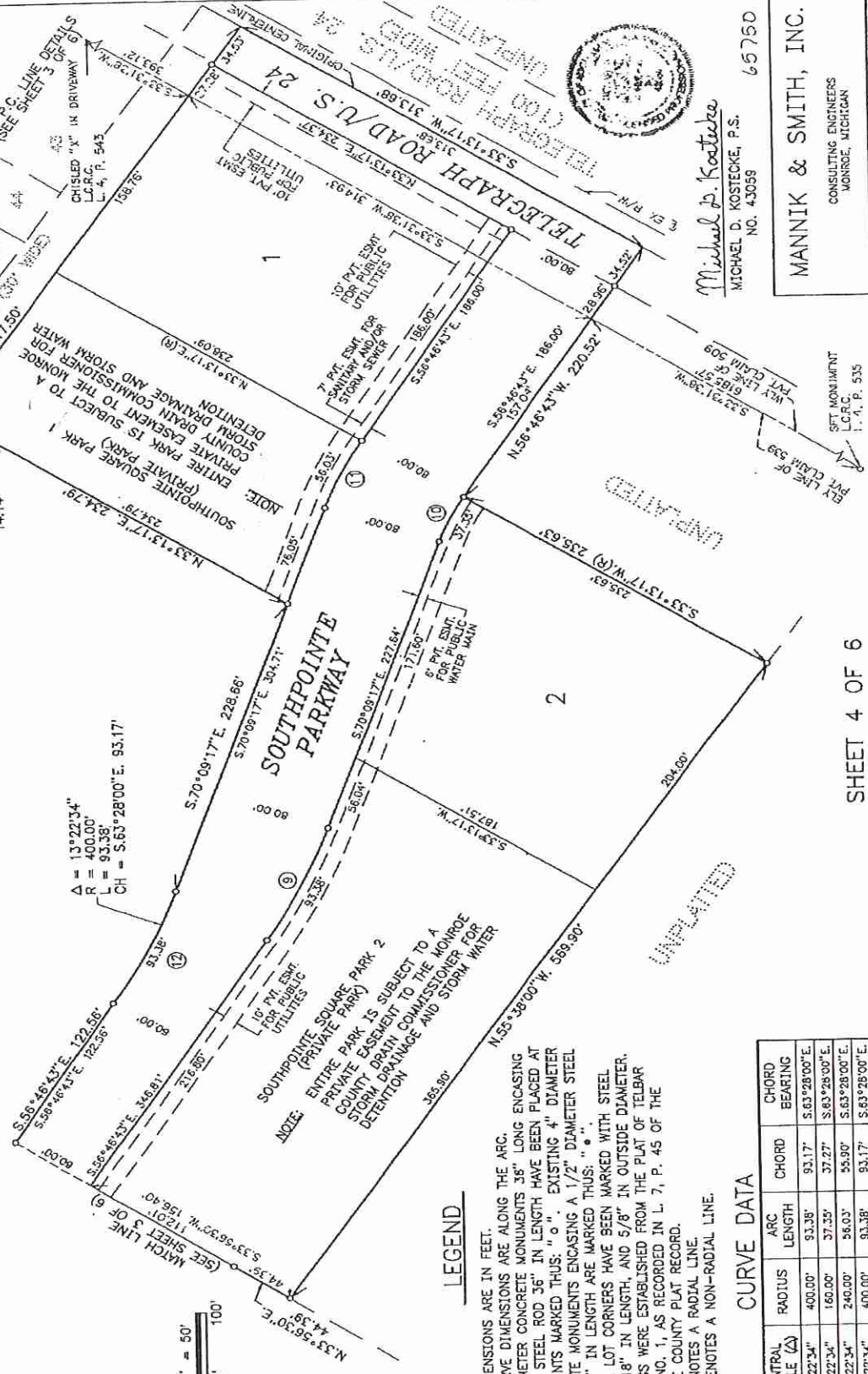


INDEX OF SHEETS
NOT TO SCALE

LOCATION MAP
NOT TO SCALE

UNPLATED

UNPLATED



LEGEND

- 1) ALL DIMENSIONS ARE IN FEET.
- 2) ALL CURVE DIMENSIONS ARE ALONG THE ARC.
- 3) 4" DIAMETER CONCRETE MONUMENTS 36" LONG ENCASED AT A 1/2" STEEL ROD 3/8" IN LENGTH HAVE BEEN PLACED AT ALL POINTS MARKED THUS: "O". EXISTING 4" DIAMETER CONCRETE MONUMENTS ENCASED A 1/2" DIAMETER STEEL ROD 3/8" IN LENGTH ARE MARKED THUS: "O".
- 4) TYPICAL LOT CORNERS HAVE BEEN MARKED WITH STEEL RODS, 18" IN LENGTH, AND 5/8" IN OUTSIDE DIAMETER.
- 5) BEARINGS WERE ESTABLISHED FROM THE PLAT OF TELBAR PLACE NO. 1, AS RECORDED IN L. 7, P. 45 OF THE MONROE COUNTY PLAT RECORD.
- 6) (R) DENOTES A RADIAL LINE.
- 7) (NR) DENOTES A NON-RADIAL LINE.

CURVE DATA

NO.	CENTRAL ANGLE (Δ)	RADIUS	ARC LENGTH	CHORD	CHORD BEARING
9	13°22'34"	400.00'	93.38'	93.17'	S.63°28'00"E.
10	13°22'34"	160.00'	37.35'	37.27'	S.63°28'00"E.
11	13°22'34"	240.00'	56.03'	55.90'	S.63°28'00"E.
12	13°22'34"	400.00'	93.38'	93.17'	S.63°28'00"E.



Michael D. Kostecke
MICHAEL D. KOSTECKE, P.S.
NO. 43059 65750

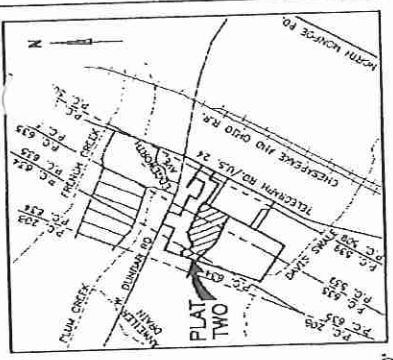
MANNIK & SMITH, INC.
CONSULTING ENGINEERS
MONROE, MICHIGAN

SOUTH NTE SQUARE PLAT TWO
 BEING PART OF PRIVATE CLAIMS 539, 634, AND 635,
 TOWN 7 SOUTH, RANGE 8 EAST,
 MONROE TOWNSHIP, MONROE COUNTY, MICHIGAN.

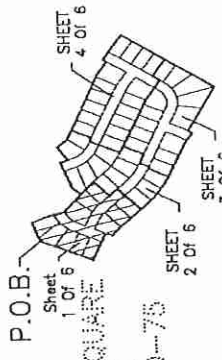
CERTIFIED TRUE COPY OF
 RECORD PLAT
 BY DEPARTMENT OF CONSUMER
 AND INDUSTRY SERVICES
 BY *M. J. ...*
 MANAGER
 SUBDIVISION CONTROL AND
 SURVEY & MEMORIALIZATION
 SECTION
 DATE 7/23/11

LEGEND

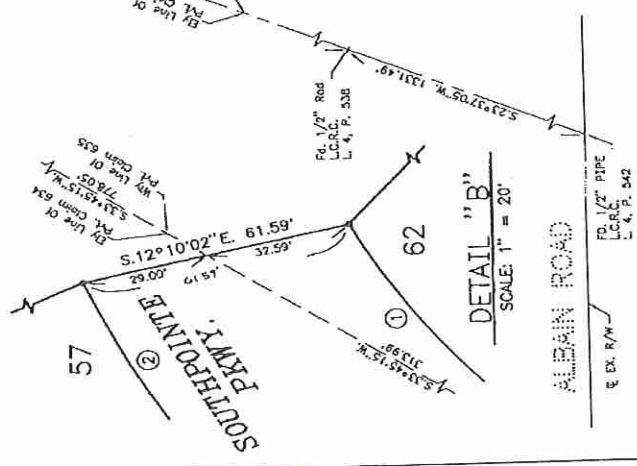
- 1) All Dimensions Are In Feet.
- 2) All Curve Dimensions Are Along The Arc.
- 3) 4" Diameter Concrete Monuments 36" Long Encasing A 1/2" Steel Rod 36" In Length Have Been Placed At All Points Marked Thus: "o". Existing 4" Diameter Concrete Monuments Encasing A 1/2" Diameter Steel Rod 36" In Length Are Marked Thus: "v".
- 4) Typical Lot Corners Have Been Marked With Steel Rods, 30" In Length, And 5/8" In Outside Diameter.
- 5) Bearings Were Established From The Plot Of Southpointe Square Plat One, As Recorded In L. 18, P. 70-75 Of The Monroe County Plat Record.
- 6) (R) Denotes A Radial Line.
- 7) (NR) Denotes A Non-Radial Line.



LOCATION MAP
 Not To Scale



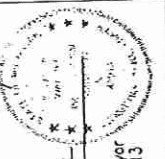
INDEX OF SHEETS
 Not To Scale



DETAIL "B"
 SCALE: 1" = 20'

CURVE DATA

NO.	CENTRAL ANGLE (Δ)	RADIUS	ARC LENGTH	CHORD	CHORD BEARING
1	39°10'45"	170.00'	116.25'	114.00'	S.43°03'10"W.
2	43°11'38"	230.00'	173.39'	166.31'	S.45°03'02"W.
3	23°10'49"	170.00'	66.78'	68.31'	S.54°57'03"E.
4	23°10'45"	230.00'	93.05'	92.42'	S.54°57'23"E.



Scott A. Warnke
 Scott A. Warnke, P.S.
 Licensed Professional Surveyor
 Michigan License No. 41913

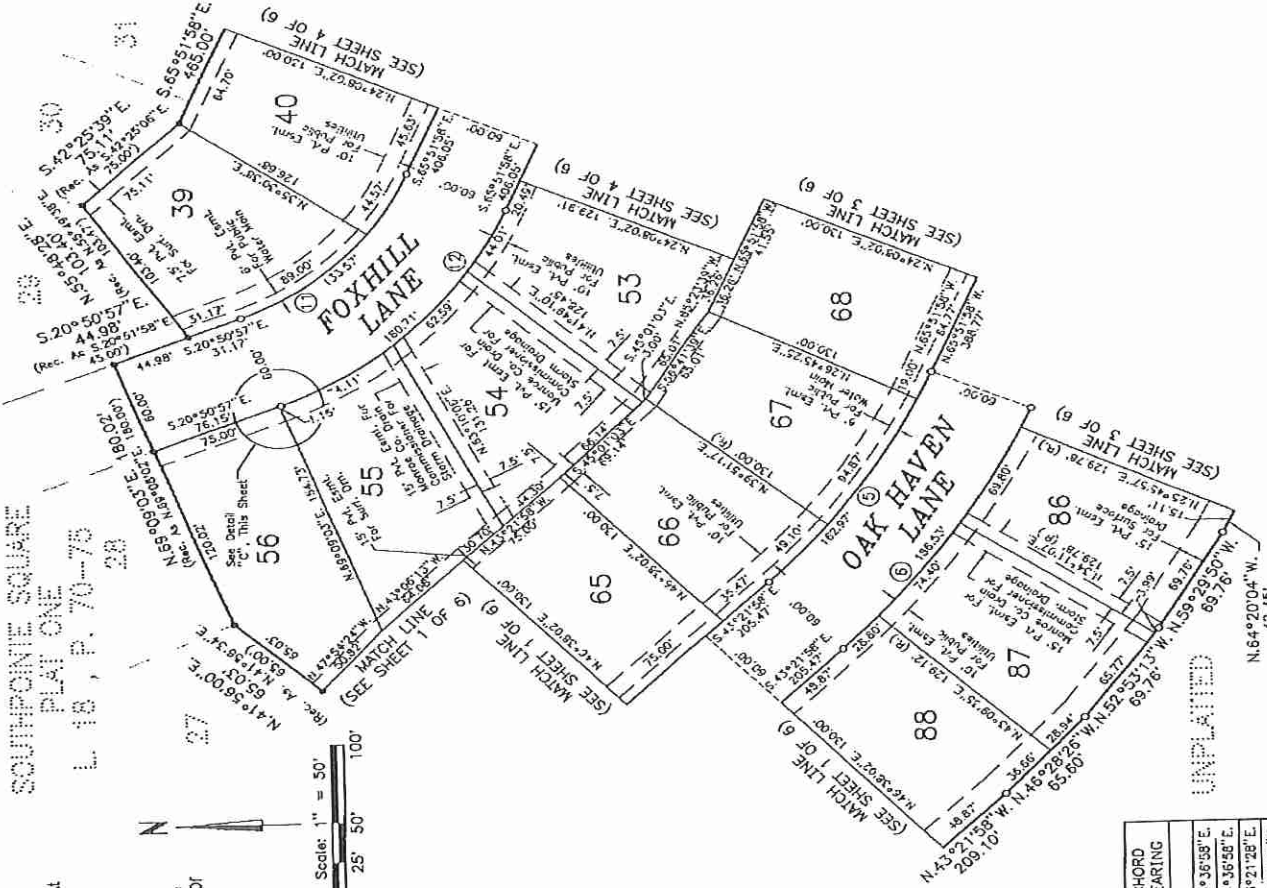
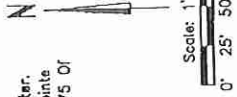
MANNIK & SMITH, INC.
 CONSULTING ENGINEERS
 MONROE, MICHIGAN

SOUTHPOINTE SQUARE PLAT TWO
 BEING PART OF PRIVATE CLAIMS 539, 634, AND 635,
 TOWN 7 SOUTH, RANGE 8 EAST,
 MONROE TOWNSHIP, MONROE COUNTY, MICHIGAN.

LEGEND

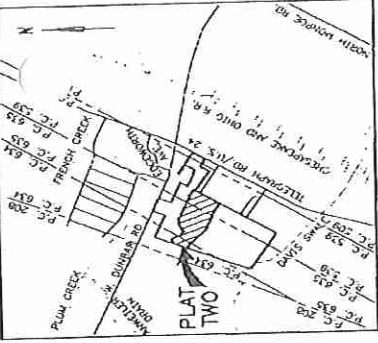
- 1) All Dimensions Are In Feet.
- 2) All Curve Dimensions Are Along The Arc.
- 3) 4" Diameter Concrete Monuments 36" Long Encasing A 1/2" Steel Rod 36" In Length Have Been Placed At All Points Marked Thus: "o". Existing 4" Diameter Concrete Monuments Encasing A 1/2" Diameter Steel Rod 36" In Length Are Marked Thus: "o".
- 4) Typical Lot Corners Have Been Marked With Steel Rods, 30" In Length, And 5/8" In Outside Diameter. Bearings Were Established From The Plat Of Southpointe Square Plat One, As Recorded In L. 18 . P. 70-75 Of The Monroe County Plat Record.
- 5) (R) Denotes A Radial Line.
- 6) (NR) Denotes A Non-Radial Line.

SOUTHPOINTE SQUARE
 PLAT ONE
 L. 18, P. 70-75



CURVE DATA

NO.	CENTRAL ANGLE (Δ)	RADIUS	ARC LENGTH	CHORD	CHORD BEARING
5	22°30'00"	415'	162.97'	161.92'	S.34°36'59"E.
6	22°30'00"	475'	186.55'	185.33'	S.54°36'56"E.
11	45°01'01"	170'	133.57'	130.16'	S.43°21'28"E.
12	45°01'01"	230'	180.71'	176.10'	S.43°21'28"E.



LOCATION MAP

NOT TO SCALE



INDEX OF SHEETS

NOT TO SCALE



DETAIL "C"

SCALE: 1" = 10'



Scott A. Warnke

Scott A. Warnke, P.E.
 Licensed Professional Surveyor
 Michigan License No. 41913

MANNIK & SMITH, INC.

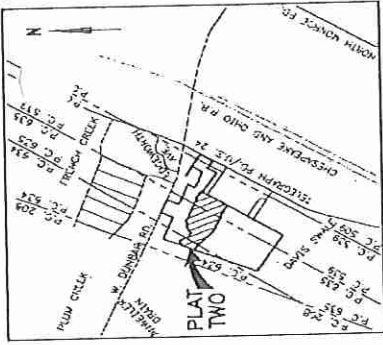
CONSULTING ENGINEERS
 MONROE, MICHIGAN

SOUTHPOINTE QUARE PLAT TWO

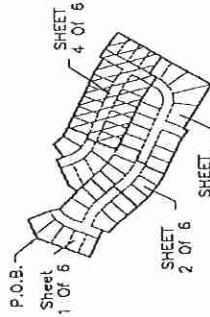
BEING PART OF PRIVATE CLAIMS 539, 634, AND 635,
TOWN 7 SOUTH, RANGE 8 EAST,
MONROE TOWNSHIP, MONROE COUNTY, MICHIGAN.

LEGEND

- 1) All Dimensions Are In Feet.
- 2) All Curve Dimensions Are Along The Arc.
- 3) 4" Diameter Concrete Monuments 36" Long Enclosing A 1/2" Steel Rod 36" In Length Have Been Placed At All Points Marked Thus: "o". Existing 4" Diameter Concrete Monuments Enclosing A 1/2" Diameter Steel Rod 36" In Length Arc Marked Thus: "o".
- 4) Typical Lot Corners Have Been Marked With Steel Rods, 30" In Length, And 5/8" In Outside Diameter. Bearings Were Established From The Plat Of Southpointe Square Plat One, As Recorded In L. 18, P. 70-75 Of The Monroe County Plat Record.
- 5) (R) Denotes A Radial Line.
- 6) (NR) Denotes A Non-Radial Line.



LOCATION MAP
NOT TO SCALE



INDEX OF SHEETS
NOT TO SCALE



Scott A. Warnke

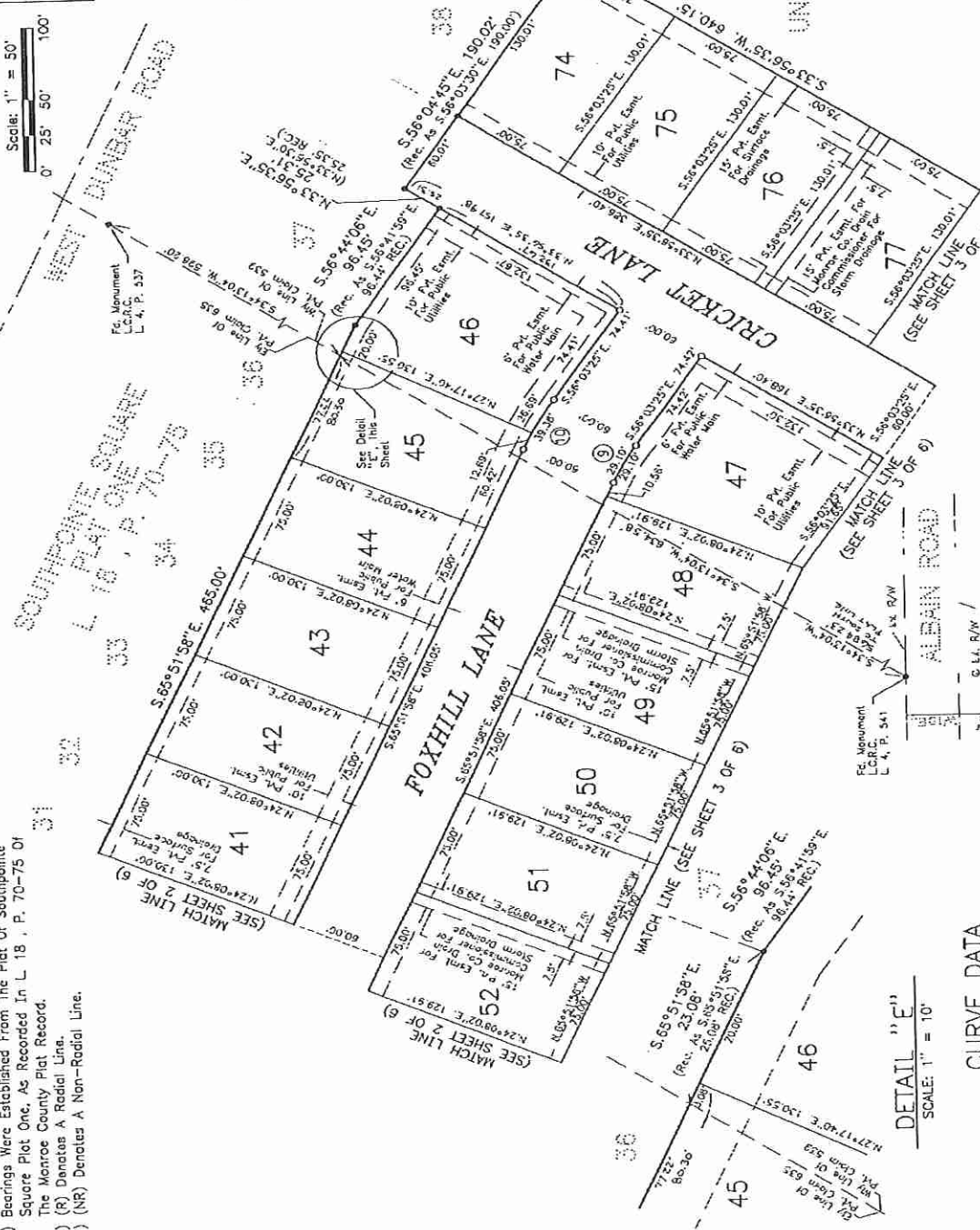
Scott A. Warnke, P.S.
Licensed Professional Surveyor
Michigan License No. 41913

MANNIK & SMITH, INC.

CONSULTING ENGINEERS
MONROE, MICHIGAN

66350

SHEET 4 OF 6



UNPLATED

CURVE DATA

NO.	CENTRAL ANGLE (A)	RADIUS	ARC LENGTH	CHORD	CHORD BEARING
9	09°48'33"	170.00'	29.10'	79.07'	N.50°57'41"W.
10	09°48'33"	230.00'	39.36'	38.33'	N.60°57'41"W.

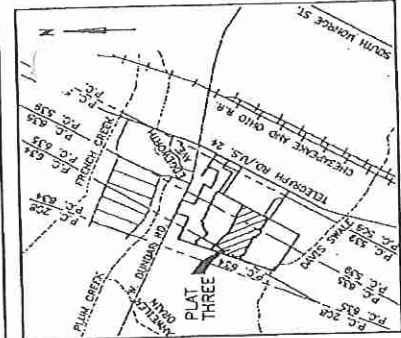
DETAIL "E"
SCALE: 1" = 10'

SOUTHPOINTE JARE PLAT THREE

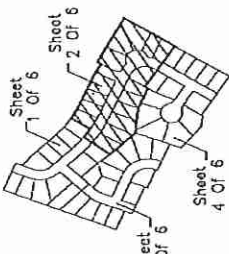
BEING PART OF PRIVATE CLAIMS 539, 634, AND 635,
TOWN 7 SOUTH, RANGE 8 EAST, MONROE TOWNSHIP,
MONROE COUNTY, MICHIGAN

LEGEND

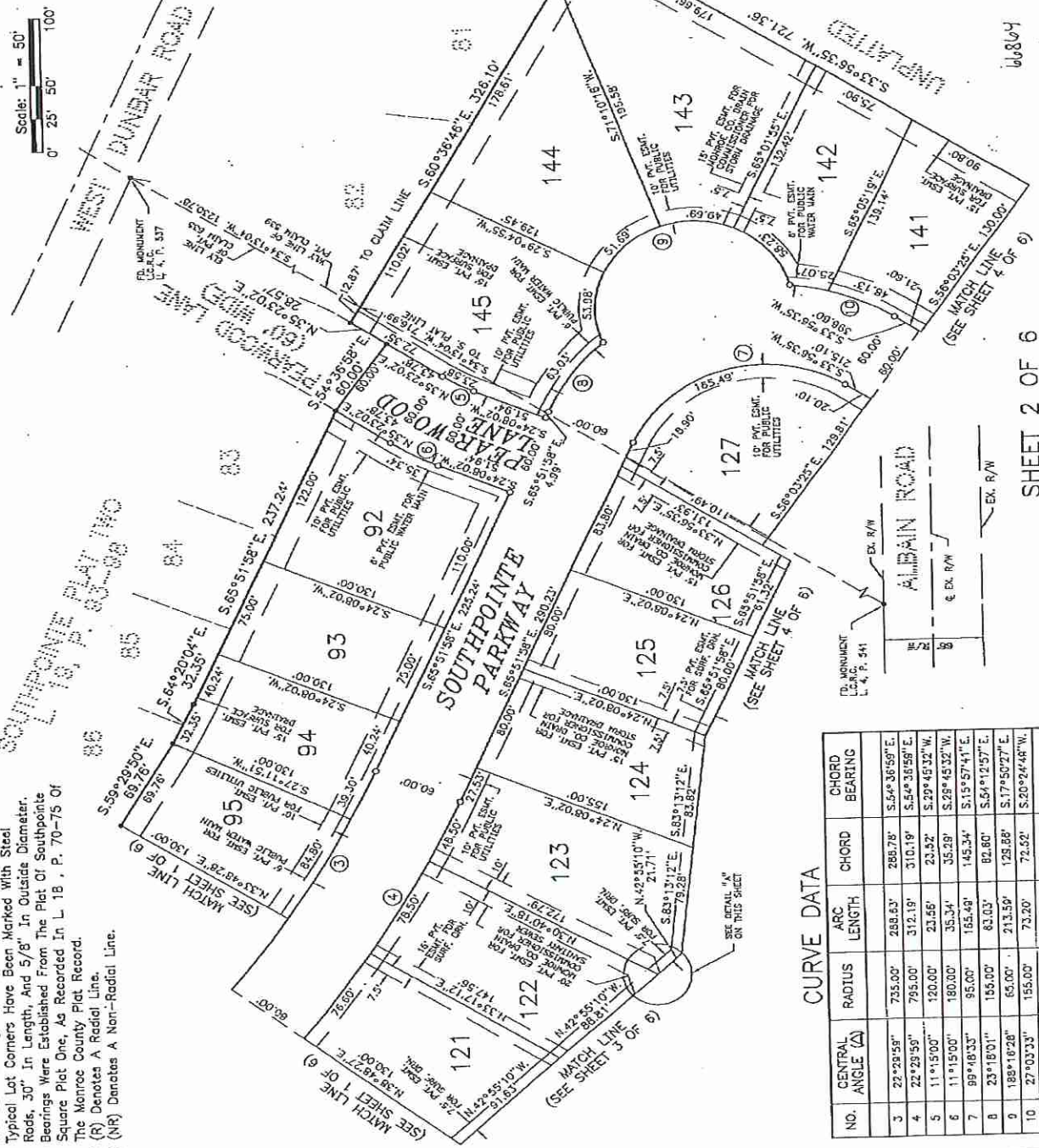
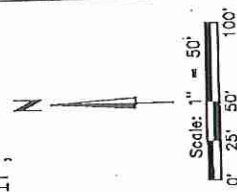
- 1) All Dimensions Are In Feet.
- 2) All Curve Dimensions Are Along The Arc.
- 3) 4" Diameter Concrete Monuments 35" Long Encasing A 1/2" Steel Rod 3/8" In Length Have Been Placed At All Points Marked Thus: "o". Existing 4" Diameter Concrete Monuments Encasing A 1/2" Diameter Steel Rod 3/8" In Length Are Marked Thus: "x".
- 4) Typical Lot Corners Have Been Marked With Steel Rods, 30" In Length, And 5/8" In Outside Diameter. Bearings Were Established From The Plat Of Southpointe Square Plat One, As Recorded In L. 18, P. 70-75 Of The Monroe County Plat Record.
- 5) (R) Denotes A Radial Line.
- 6) (NR) Denotes A Non-Radial Line.



LOCATION MAP
Not To Scale



INDEX OF SHEETS
Not To Scale



CURVE DATA

NO.	CENTRAL ANGLE (A)	RADIUS	ARC LENGTH	CHORD	CHORD BEARING
3	22°29'59"	735.00'	288.63'	288.78'	S.54°36'59"E.
4	22°29'59"	795.00'	312.19'	310.19'	S.54°36'59"E.
5	11°15'00"	120.00'	23.56'	23.52'	S.29°45'32"W.
6	11°15'00"	180.00'	35.34'	35.29'	S.29°45'32"W.
7	99°48'33"	95.00'	165.49'	145.34'	S.15°57'41"E.
8	23°18'01"	155.00'	52.80'	82.80'	S.54°12'57"E.
9	188°18'28"	65.00'	213.59'	125.88'	S.17°50'27"E.
10	27°02'33"	155.00'	73.20'	73.52'	S.20°26'48"W.



Scott A. Warkie, P.S.
Licensed Professional Surveyor
Michigan License No. 41913

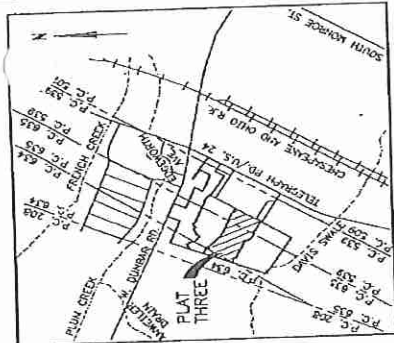
THE MANNIK & SMITH GROUP, INC.
CONSULTING ENGINEERS
MONROE, MICHIGAN

SOUTHPOINTE SQUARE PLAT THREE

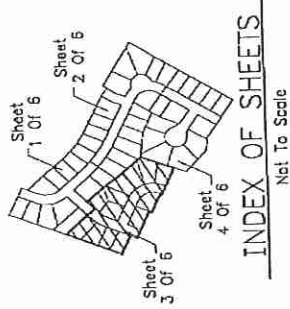
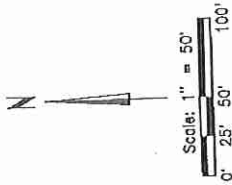
BEING PART OF PRIVATE CLAIMS 539, 634, AND 635,
TOWN 7 SOUTH, RANGE 8 EAST, MONROE TOWNSHIP
MONROE COUNTY, MICHIGAN

LEGEND

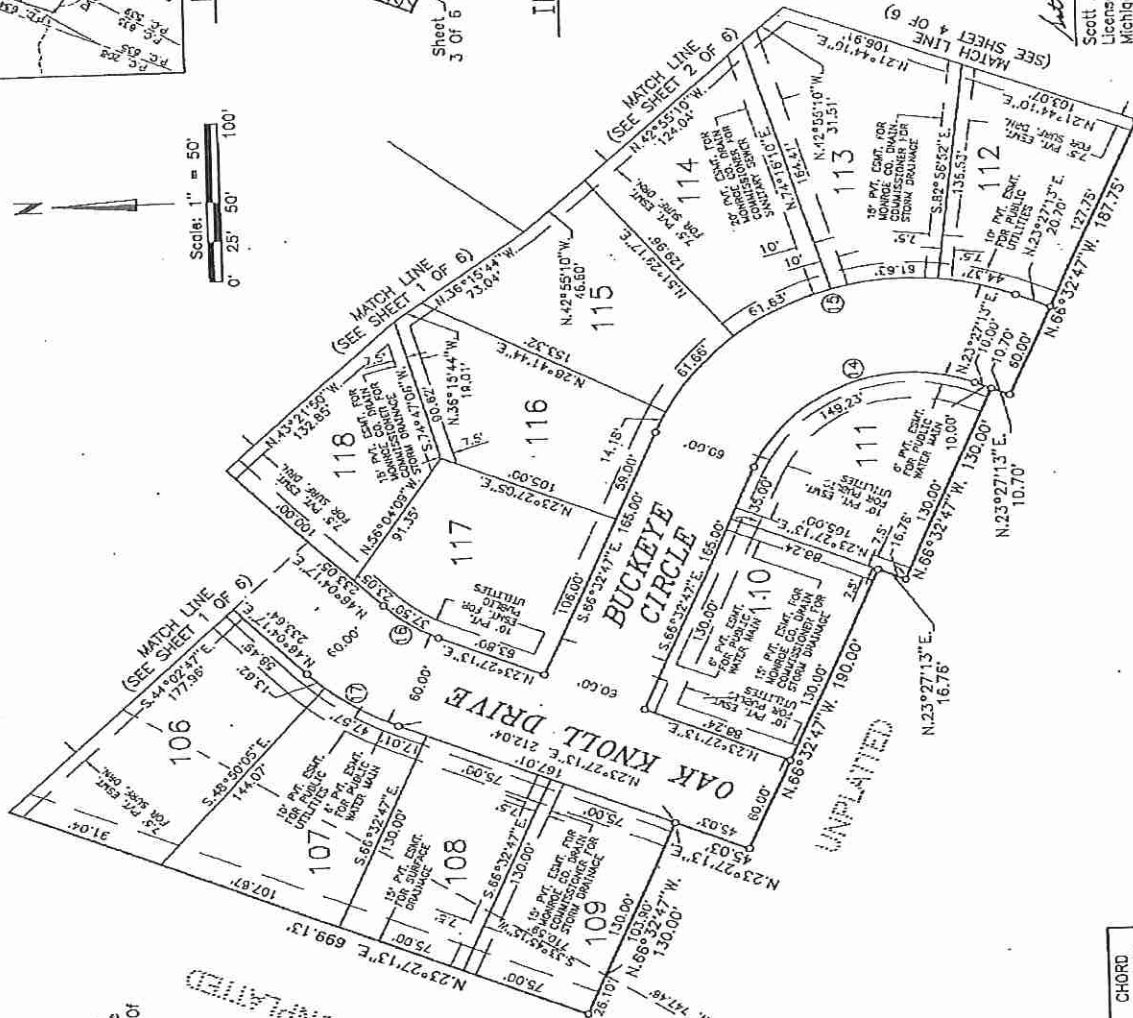
- 1) All Dimensions Are In Feet.
- 2) All Curve Dimensions Are Along The Arc.
- 3) 4" Diameter Concrete Monuments 36" Long Encasing A 1/2" Steel Rod 3/8" In Length Have Been Placed At All Points Marked Thus: "O". Existing 4" Diameter Concrete Monuments Encasing A 1/2" Diameter Steel Rod 3/8" In Length Are Marked Thus: "A".
- 4) Typical Lot Corners Have Been Marked With Steel Rods, 30" In Length, And 5/8" In Outside Diameter.
- 5) Bearings Were Established From The Plat Of Southpointe Square Plat One, As Recorded In L. 18 . P. 70-75 Of The Monroe County Plat Record.
- 6) (R) Denotes A Radial Line.
- 7) (NR) Denotes A Non-Radial Line.



LOCATION MAP
Net To Scale



INDEX OF SHEETS
Net To Scale



CURVE DATA

NO.	CENTRAL ANGLE (Δ)	RADIUS	ARC LENGTH	CHORD	CHORD BEARING
14	90°00'00"	95.00'	149.23'	134.35'	S.21°32'47"E.
15	90°00'00"	155.00'	243.47'	219.20'	N.21°32'47"W.
16	22°37'04"	95.00'	37.50'	37.28'	S.34°45'45"W.
17	22°37'04"	155.00'	61.13'	60.70'	N.34°45'45"E.



Scott A. Warnke, P.S.
Licensed Professional Surveyor
Michigan License No. 41913

**THE MANNIK & SMITH
GROUP, INC.**
CONSULTING ENGINEERS
MONROE, MICHIGAN

60814

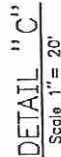
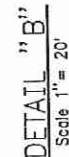
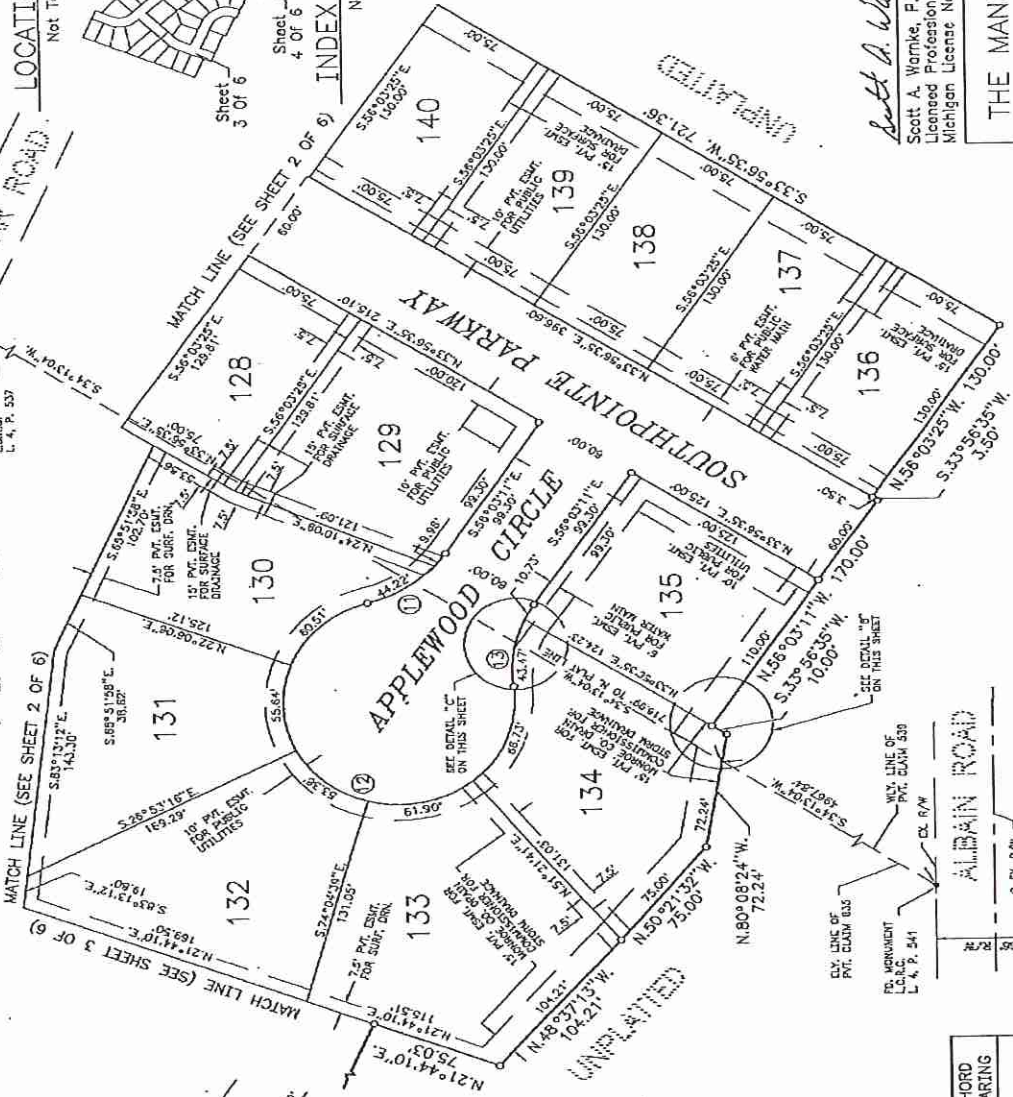
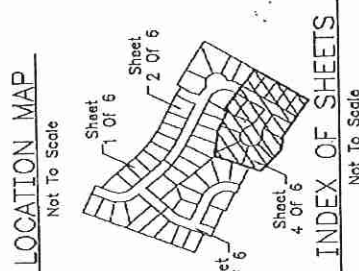
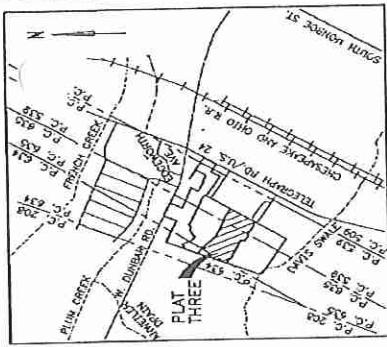
SHEET 3 OF 6

SOUTHPOINTE VARE PLAT THREE

BEING PART OF PRIVATE CLAIMS 539, 634, AND 635,
TOWN 7 SOUTH, RANGE 8 EAST, MONROE TOWNSHIP,
MONROE COUNTY, MICHIGAN

LEGEND

- 1) All Dimensions Are In Feet.
- 2) All Curve Dimensions Are Along The Arc.
- 3) 4" Diameter Concrete Monuments 36" Long Encasing A 1/2" Steel Rod 3/6" In Length Have Been Placed At All Points Marked Thus: "o". Existing 4" Diameter Concrete Monuments Encasing A 1/2" Diameter Steel Rod 3/6" In Length Are Marked Thus: "o".
- 4) Typical Lot Corners Have Been Marked With Steel Rods, 30" In Length, And 3/8" In Outside Diameter.
- 5) Bearings Were Established From The Plat Of Southpointa Square Plat One, As Recorded In L. 18 . P. 70-75 Of The Monroe County Plat Record.
- 6) (R) Denotes A Radial Line.
- 7) (NR) Denotes A Non-Radial Line.



CURVE DATA

NO.	CENTRAL ANGLE (Δ)	RADIUS	ARC LENGTH	CHORD	CHORD BEARING
11	41° 24' 35"	75.00'	54.20'	53.03'	S.35° 20' 54" E.
12	282° 49' 10"	85.00'	298.16'	97.50'	S.33° 58' 48" W.
13	41° 24' 35"	75.00'	54.20'	53.03'	S.79° 45' 28" E.



Scott A. Warnke
 Scott A. Warnke, F.S.
 Licensed Professional Surveyor
 Michigan License No. 41913

**THE MANNIK & SMITH
 GROUP, INC.**

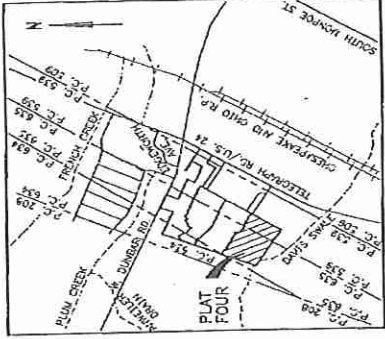
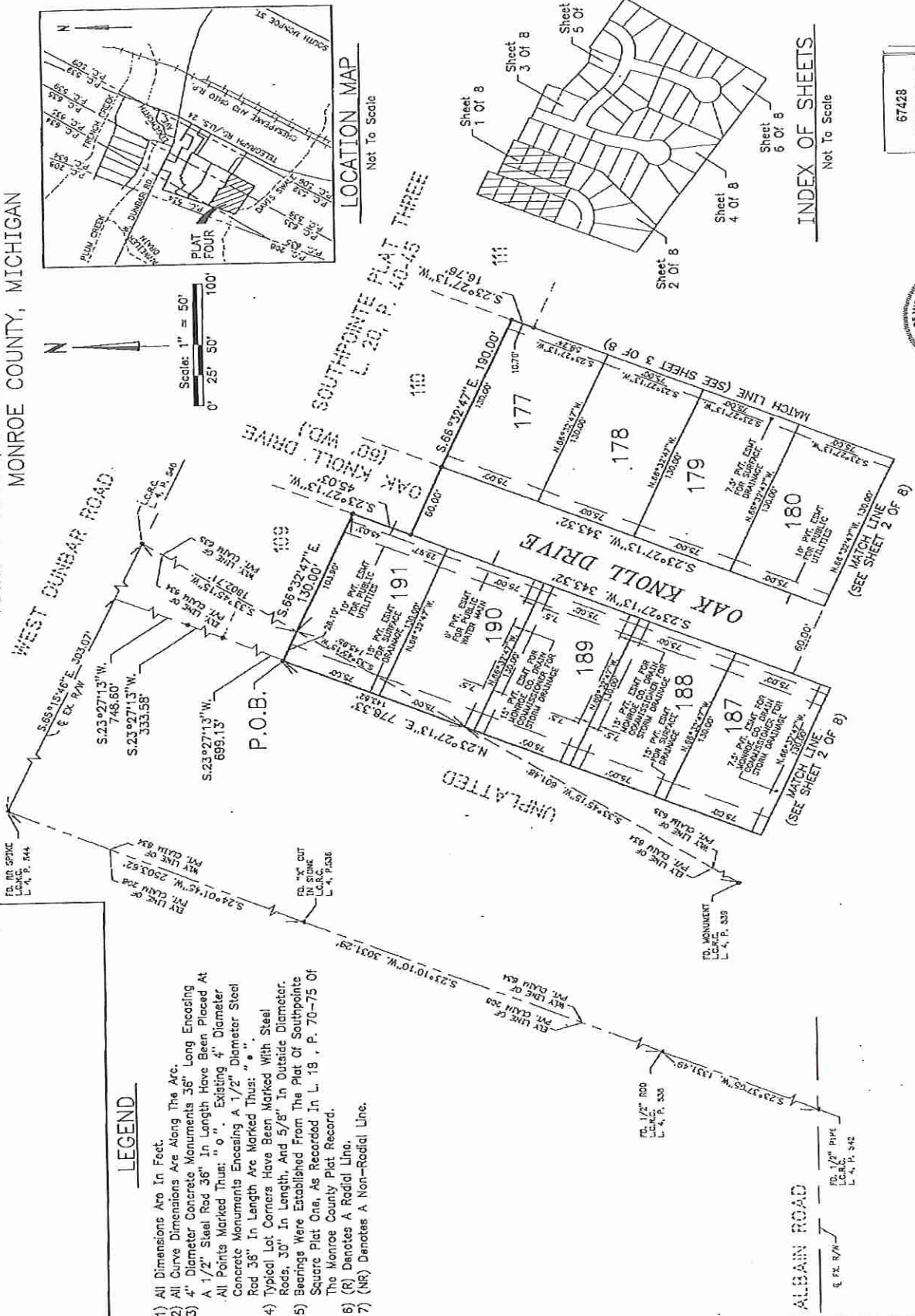
CONSULTING ENGINEERS
 MONROE, MICHIGAN

60804

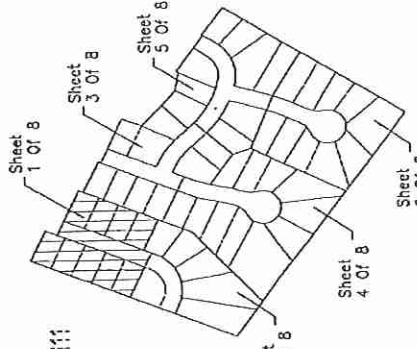
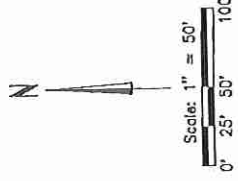
SHEET 4 OF 6

SOUTHPOINTE SQUARE PLAT FOUR

BEING PART OF PRIVATE CLAIMS 539, 634, AND 635,
TOWN 7 SOUTH, RANGE 8 EAST, MONROE TOWNSHIP,
MONROE COUNTY, MICHIGAN



LOCATION MAP
Not To Scale



INDEX OF SHEETS
Not To Scale

LEGEND

- 1) All Dimensions Are In Feet.
- 2) All Curve Dimensions Are Along The Arc.
- 3) 4" Diameter Concrete Monuments 36" Long Encasing A 1/2" Steel Rod 36" In Length Have Been Placed At All Points Marked Thus: "o". Existing 4" Diameter Concrete Monuments Encasing A 1/2" Diameter Steel Rod 36" In Length Are Marked Thus: "o". Typical Lot Corners Have Been Marked With Steel Rods, 30" In Length, And 5/8" In Outside Diameter. Bearings Were Established From The Plat Of Southpointe Square Plat One, As Recorded In L. 18, P. 70-75 Of The Monroe County Plat Record.
- 6) (R) Denotes A Radial Line.
- 7) (NR) Denotes A Non-Radial Line.



Scott A. Warrick
Scott A. Warrick, P.S.
Licensed Professional Surveyor
Michigan License No. 41913

THE MANNIK & SMITH
GROUP, INC.
CONSULTING ENGINEERS
MONROE, MICHIGAN

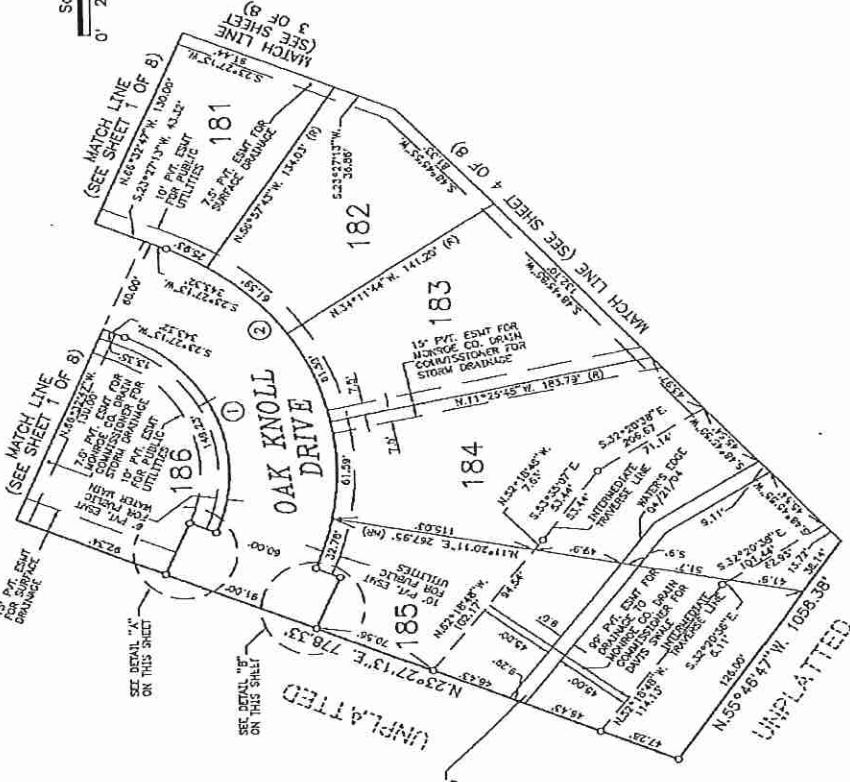
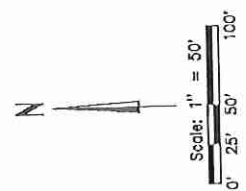
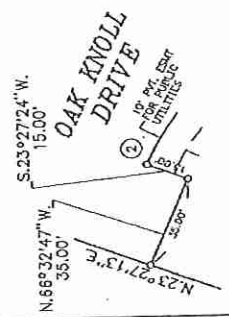
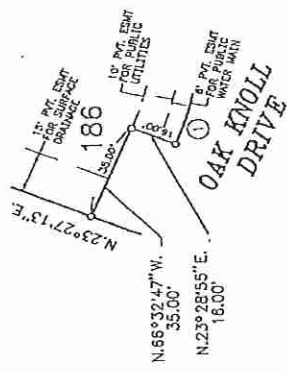
67428

SOUTHPOINTE SQUARE PLAT FOUR

BEING PART OF PRIVATE CLAIMS 539, 634, AND 635,
TOWN 7 SOUTH, RANGE 8 EAST, MONROE TOWNSHIP,
MONROE COUNTY, MICHIGAN

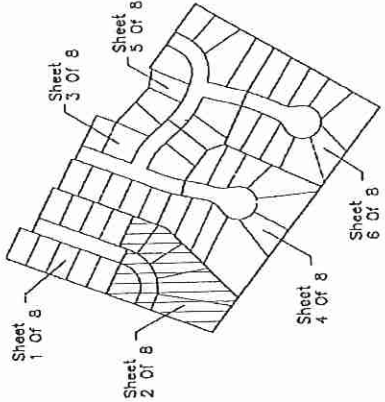
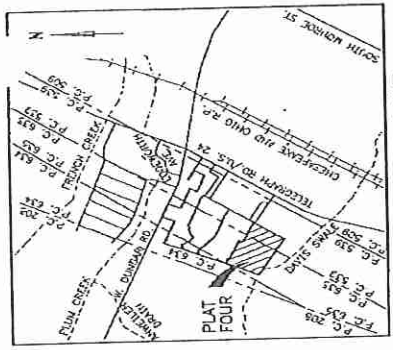
LEGEND

- 1) All Dimensions Are In Feet.
- 2) All Curve Dimensions Are Along The Arc.
- 3) 4" Diameter Concrete Monuments 36" Long Encasing A 1/2" Steel Rod 3/8" In Length Have Been Placed At All Points Marked Thus: "o". Existing 4" Diameter Concrete Monuments Encasing A 1/2" Diameter Steel Rod 3/8" In Length Are Marked Thus: "o".
- 4) Typical Lot Corners Have Been Marked With Steel Rods, 30" In Length, And 5/8" In Outside Diameter. Bearings Were Established From The Plat Of Southpointe Square Plat One, As Recorded In L. 18, P. 70-75 Of The Monroe County Plat Record.
- 5) (R) Denotes A Radial Line.
- 6) (NR) Denotes A Non-Radial Line.



CURVE DATA

NO.	CENTRAL ANGLE (Δ)	RADIUS	ARC LENGTH	CHORD	CHORD BEARING
1	90°00'00"	95.00'	148.23'	134.35'	S.68°57'13"W.
2	90°00'00"	155.00'	263.48'	219.20'	N.88°27'13"E.



Scott A. Womke
Scott A. Womke, P.S.
Licensed Professional Surveyor
Michigan License No. 41913

THE MANNIK & SMITH GROUP, INC.
CONSULTING ENGINEERS
MONROE, MICHIGAN

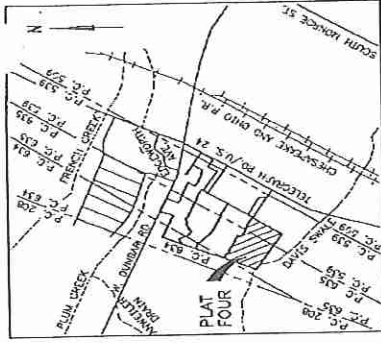
LEGEND

- 1) All Dimensions Are In Feet.
- 2) All Curve Dimensions Are Along The Arc.
- 3) 4" Diameter Concrete Monuments 36" Long Encasing At A 1/2" Steel Rod 3/8" In Length Have Been Placed At All Points Marked Thus: "o". Existing 4" Diameter Concrete Monuments Encasing A 1/2" Diameter Steel Rod 3/8" In Length Are Marked Thus: "x".
- 4) Typical Lot Corners Have Been Marked With Steel Rods, 30" In Length, And 5/8" In Outside Diameter.
- 5) Bearings Were Established From The Plat Of Southpointe Square Plat One, As Recorded In L. 18 . P. 70-75 Of The Monroe County Plat Record.
- 6) (R) Denotes A Radial Line.
- 7) (NR) Denotes A Non-Radial Line.
- 8) By Monroe Charter Township Resolution #03-23, October 21, 2003 The Road Named Buckeye Circle in Southpointe Square Plat 3 Has Been Changed To Oak Valley Lane. Recorded In Liber 2615, Page 850, Monroe County Records.

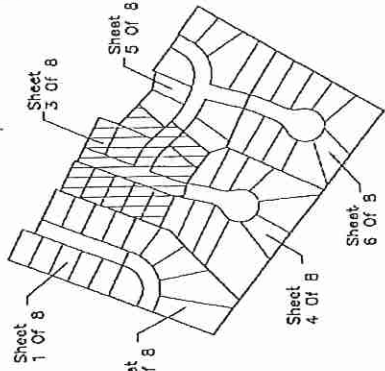
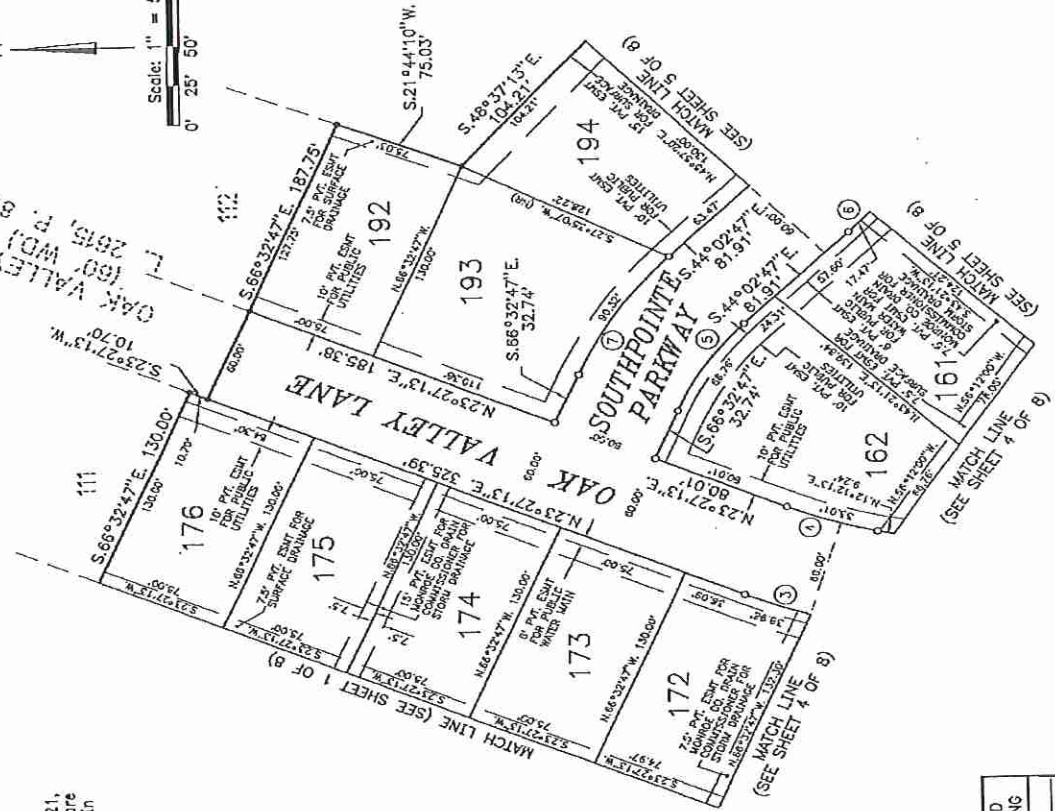
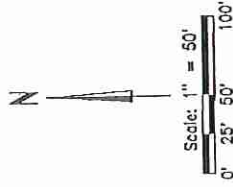
SOUTHPOINTE SQUARE PLAT FOUR

BEING PART OF PRIVATE CLAIMS 539, 634, AND 635, TOWN 7 SOUTH, RANGE 8 EAST, MONROE TOWNSHIP, MONROE COUNTY, MICHIGAN

SOUTHPOINTE PLAT 3
L. 20, P. 40-45



LOCATION MAP
Not To Scale



INDEX OF SHEETS
Not To Scale

CURVE DATA

NO.	CENTRAL ANGLE (Δ)	RADIUS	ARC LENGTH	CHORD	CHORD BEARING
3	11°15'00"	330.00'	64.80'	64.65'	N.17°48'43"E
4	11°15'00"	270.00'	53.01'	52.53'	N.17°49'43"E
5	22°30'00"	170.00'	85.78'	86.33'	S.58°17'47"E
6	24°58'00"	385.00'	167.78'	166.45'	S.58°31'01"E
7	22°40'00"	230.00'	90.32'	89.74'	N.58°17'47"W



Scott A. Wamka
Scott A. Wamka, P.S.
Licensed Professional Surveyor
Michigan License No. 41913

THE MANNIK & SMITH GROUP, INC.
CONSULTING ENGINEERS
MONROE, MICHIGAN

67428

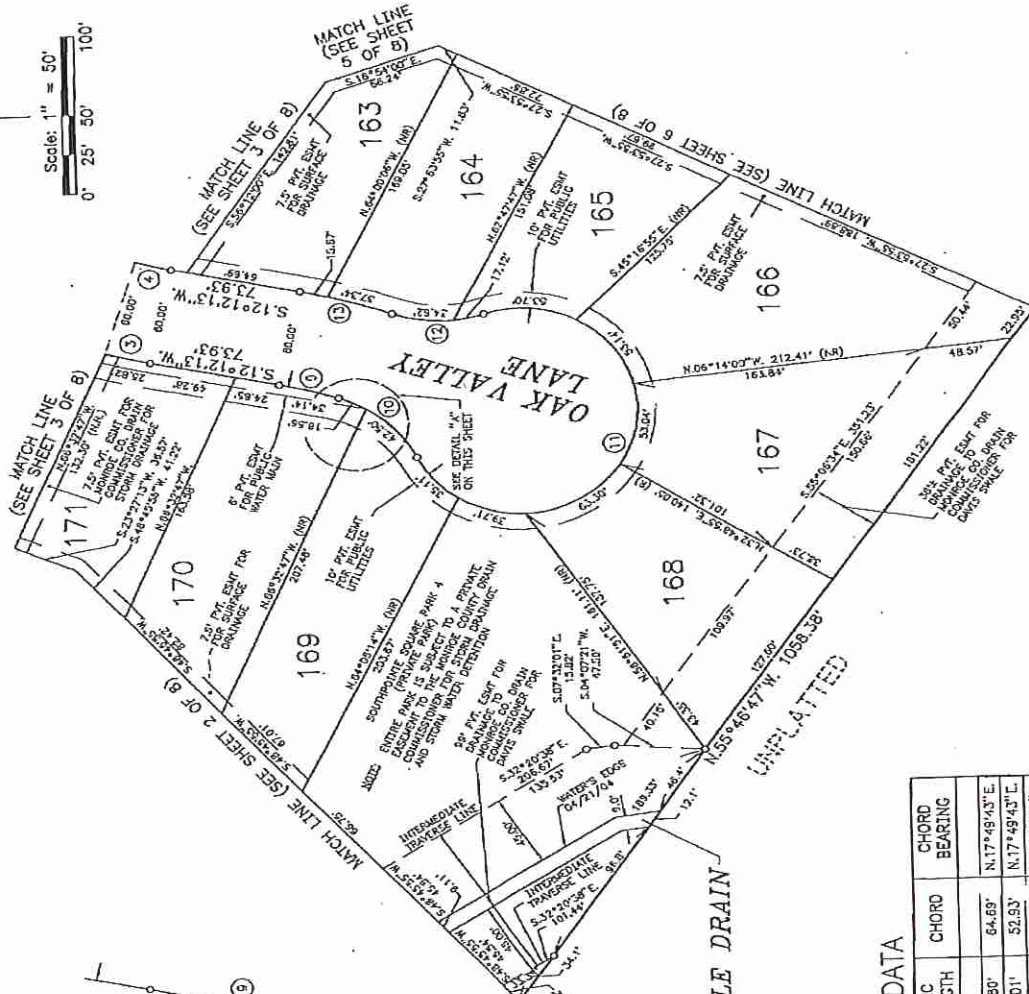
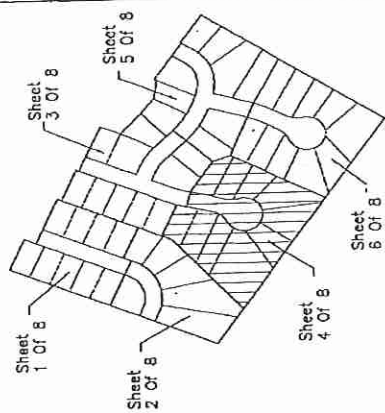
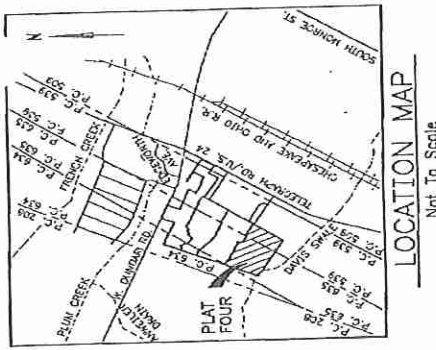
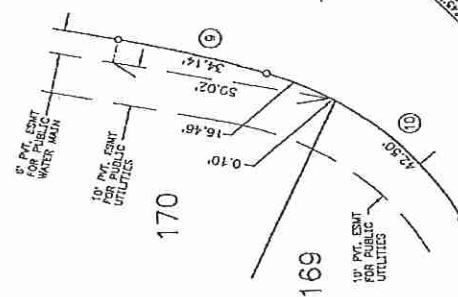
SHEET 3 OF 8

SOUTHPOINTE SQUARE PLAT FOUR

BEING PART OF PRIVATE CLAIMS 539, 634, AND 635,
TOWN 7 SOUTH, RANGE 8 EAST, MONROE TOWNSHIP,
MONROE COUNTY, MICHIGAN

LEGEND

- 1) All Dimensions Are In Feet.
- 2) All Curve Dimensions Are Along The Arc.
- 3) 4" Diameter Concrete Monuments 36" Long Encasing At A 1/2" Steel Rod 3/8" In Length Have Been Placed At All Points Marked Thus: "o". Existing 4" Diameter Concrete Monuments Encasing A 1/2" Diameter Steel Rod 3/8" In Length Are Marked Thus: "o".
- 4) Typical Lot Corners Have Been Marked With Steel Rods, 3/8" In Length, And 5/8" In Outside Diameter. Bearings Were Established From The Plat Of Southpointe Square Plat One, As Recorded In L. 18, P. 70-75 Of The Monroe County Plat Record.
- 5) (R) Denotes A Radial Line.
- 6) (NR) Denotes A Non-Radial Line.



CURVE DATA

NO.	CENTRAL ANGLE (Δ)	RADIUS	ARC LENGTH	CHORD	CHORD BEARING
3	11° 15' 00"	330.00'	64.80'	64.69'	N.17° 49' 43" E.
4	11° 15' 00"	270.00'	53.01'	52.93'	N.17° 49' 43" E.
9	07° 14' 44"	770.00'	34.14'	34.12'	N.15° 48' 33" E.
10	43° 07' 07"	75.00'	59.06'	57.55'	N.42° 00' 30" E.
11	262° 40' 58"	65.00'	298.00'	97.60'	S.66° 48' 28" E.
12	39° 31' 27"	75.00'	51.74'	50.72'	S.01° 38' 48" W.
13	09° 12' 18"	330.00'	53.01'	52.86'	N.16° 48' 27" E.



Scott A. Wernicke
 Scott A. Wernicke, P.E.
 Licensed Professional Surveyor
 Michigan License No. 41913

**THE MANNIK & SMITH
GROUP, INC.**
 CONSULTING ENGINEERS
 MONTELEONE, MICHIGAN

SOUTHPOINTE QUARE PLAT FOUR

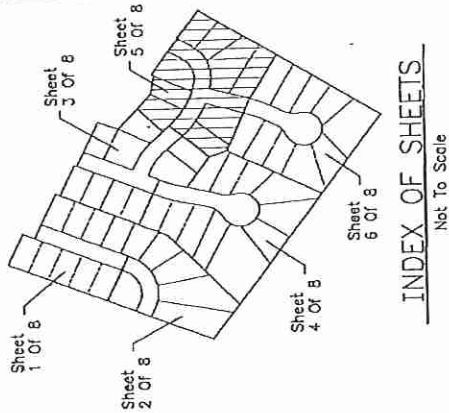
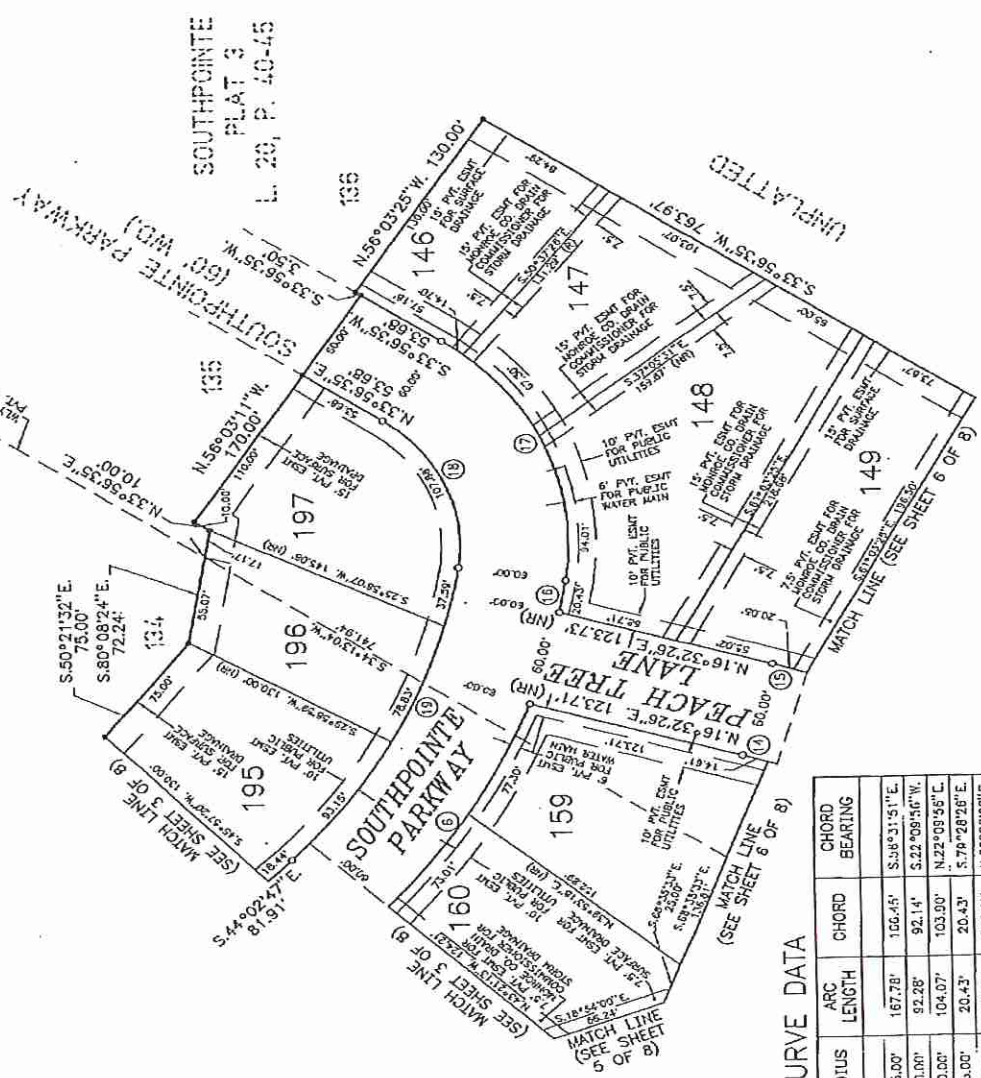
BEING PART OF PRIVATE CLAIMS 539, 634, AND 635,
TOWN 7 SOUTH, RANGE 8 EAST, MONROE TOWNSHIP,
MONROE COUNTY, MICHIGAN

LEGEND

- 1) All Dimensions Are In Feet.
- 2) All Curve Dimensions Are Along The Arc.
- 3) 4" Diameter Concrete Monuments 36" Long Enclosing A 1/2" Steel Rod 36" In Length Have Been Placed At All Points Marked Thus: "o". Existing 4" Diameter Concrete Monuments Enclosing A 1/2" Diameter Steel Rod 36" In Length Are Marked Thus: "o".
- 4) Typical Lot Corners Have Been Marked With Steel Rods, 30" In Length, And 5/8" In Outside Diameter.
- 5) Bearings Were Established From The Plat Of Southpointe Square Plat One, As Recorded In L. 18, P. 70-75 Of The Monroe County Plat Record.
- 6) (R) Denotes A Radial Line.
- 7) (NR) Denotes A Non-Radial Line.



LOCATION MAP
Not To Scale



CURVE DATA

NO.	CENTRAL ANGLE (Δ)	RADIUS	ARC LENGTH	CHORD	CHORD BEARING
6	24°58'08"	395.00'	167.78'	156.45'	S.58°31'51"E
14	11°15'00"	470.00'	92.28'	92.14'	S.22°08'56"W
15	11°15'00"	530.00'	104.07'	103.90'	N.22°08'56"E
16	03°09'27"	395.00'	20.43'	20.43'	S.79°28'28"E
17	85°03'45"	155.00'	176.01'	166.71'	N.66°28'28"E
18	65°03'45"	95.00'	107.88'	102.17'	N.60°28'28"E
19	36°56'53"	325.00'	209.57'	205.97'	N.52°53'13"W



Scott A. Warnke, P.E.
Licensed Professional Surveyor
Michigan License No. 41913

THE MANNIK & SMITH
GROUP, INC.

CONSULTING ENGINEERS
MONROE, MICHIGAN

SOUTHPOINTE SQUARE PLAT FOUR

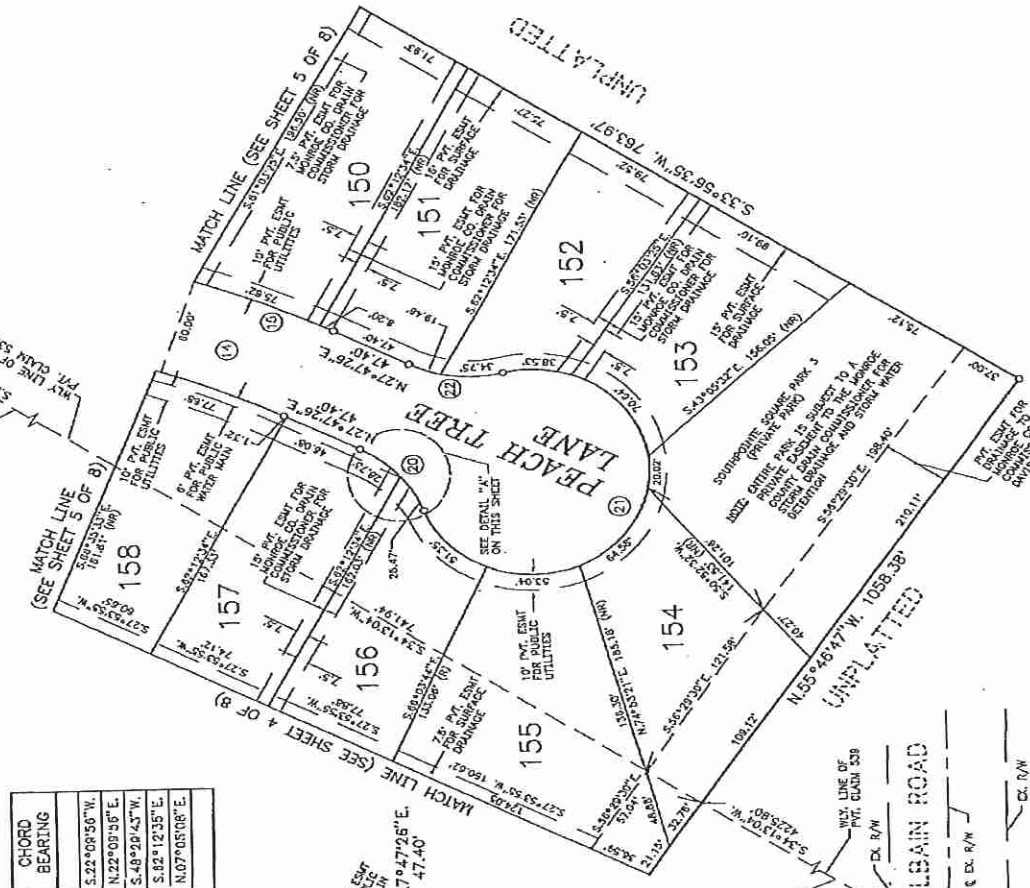
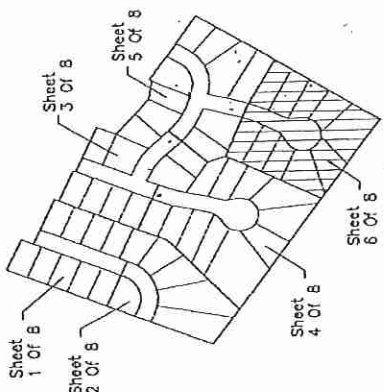
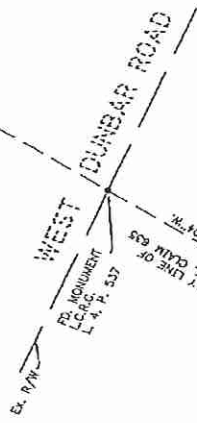
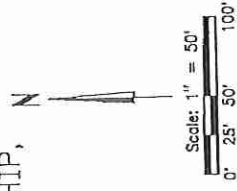
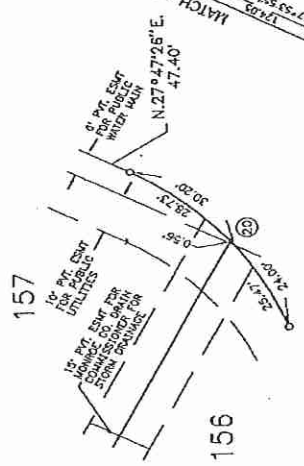
BEING PART OF PRIVATE CLAIMS 539, 634, AND 635,
TOWN 7 SOUTH, RANGE 8 EAST, MONROE TOWNSHIP,
MONROE COUNTY, MICHIGAN

LEGEND

- 1) All Dimensions Are In Feet.
- 2) All Curve Dimensions Are Along The Arc.
- 3) 4" Diameter Concrete Monuments 35' Long Encasing A 1/2" Steel Rod 35" In Length Have Been Placed At All Points Marked Thus: "o". Existing 4" Diameter Concrete Monuments Encasing A 1/2" Diameter Steel Rod 35" In Length Are Marked Thus: "o".
- 4) Typical Lot Corners Have Been Marked With Steel Rods, 30" In Length, And 5/8" In Outside Diameter. Bearings Were Established From The Plat Of Southpointe Square Plat One, As Recorded In L. 18, P. 70-75 Of The Monroe County Plat Record.
- 5) (R) Denotes A Radial Line.
- 6) (NR) Denotes A Non-Radial Line.

CURVE DATA

NO.	CENTRAL ANGLE (Δ)	RADIUS	ARC LENGTH	CHORD	CHORD BEARING
14	11°15'00"	470.00'	92.28'	92.14'	S.22°08'58"W.
15	11°15'00"	520.00'	104.07'	103.90'	N.22°09'56"E.
20	41°24'35"	75.00'	54.20'	53.03'	S.48°29'43"W.
21	49°49'00"	65.00'	288.16'	97.50'	S.82°12'35"E.
22	41°24'35"	75.00'	54.21'	53.03'	N.07°05'08"E.



Scott A. Wornke
Scott A. Wornke, P.S.
Licensed Professional Surveyor
Michigan License No. 41913.

**THE MANNIK & SMITH
GROUP, INC.**
CONSULTING ENGINEERS
MONROE, MICHIGAN

67428

SHEET 6 OF 8